

**Agenda**  
**Cathedral Village Community Association (CVCA)**  
**Community Meeting/Forum**  
**June 6, 2023**  
**6:30-8:00 PM**  
**Catholic Education Centre – Gratton Room**  
**3120 14<sup>th</sup> Avenue**

1. Welcome and Land Acknowledgement – S. Weninger, Board Chair  
I wish to acknowledge that we are on Treaty 4 territory, the unceded lands of the nêhiyawak, nahkawé, Nakota, and homeland of the Métis, Lakota, and Dakota. As a settler I am committed to acknowledging the truth, working toward intentional and meaningful reconciliation in my personal and professional life and encouraging those around me to move forward in their journey of truth and reconciliation.
2. Opening Prayer – B. Kowalchuk
3. Presentation – S. Chase
4. Discussion – S. Chase
5. Adjournment – S. Weninger
6. Closing Prayer – J. Bushi



# Holy Rosary Community School

## Review History

- **October 5, 2020** - Board moved to review school
- **October 12, 2020** - Holy Rosary Community School Staff informed
- **October 20, 2020** - Holy Rosary CSCC informed
- **November 1, 2020** - School Review Committee established



# Holy Rosary Community School Review

## Review History

- School Review Committee consults with community:
  - **November 3, 2020** - First community letter sent to all families
  - **December 2, 2020** - Second community letter, and community survey sent home
  - **December 4, 2020** - Invite to attend December 10<sup>th</sup> community meeting sent
  - **December 11, 2020** - Survey closed



# Holy Rosary Community School Review

## Review History

- **February 1, 2021** - School Review Committee presented to the Board of Trustees
- Board extended the review period to **December 31, 2021**
- **December 6, 2021** - Board made a final decision: Holy Rosary School will remain open.



# Holy Rosary Community School Review

## School Review Criteria

(Board Policy 14, Education Act, School Division Administration Regulations, Ministry of Education School Review Handbook)

- **Physical condition of the building**
- **Operating Cost per Student**
- **Staffing Costs**
- **Classroom Makeup**
- **Projected Enrolment**
- **Capacity of Receiving School**
- **Transportation Review**
- **Educational Programming**
- *All these criteria were assessed in 2020/21 school review*



# Holy Rosary Community School Review

## Current Physical Condition of the Building

Recommendations from the 2022-23 structural review (version 1 Oct. 2022, version 2 update Jan. 2023) include:

- The original building has served its useful life and plans should be made to replace it within the next 3 years. In the meantime, the structure should be inspected every 6 months to monitor for further deterioration. It is possible that repairs may be required at some walls to ensure satisfactory performance (*complete*)
- The west half of the south exterior wall should be upgraded in the same manner as the east portion as soon as possible following the east repairs to ensure satisfactory performance of this wall (*complete*).
- The condition of the steel beam bearing and the support of the bricks wall at the transition between the 1914 and 1928 buildings should be further investigated and repairs may need to be done (*complete*).



# Holy Rosary Community School Review

## Physical Condition of the Building in 2022

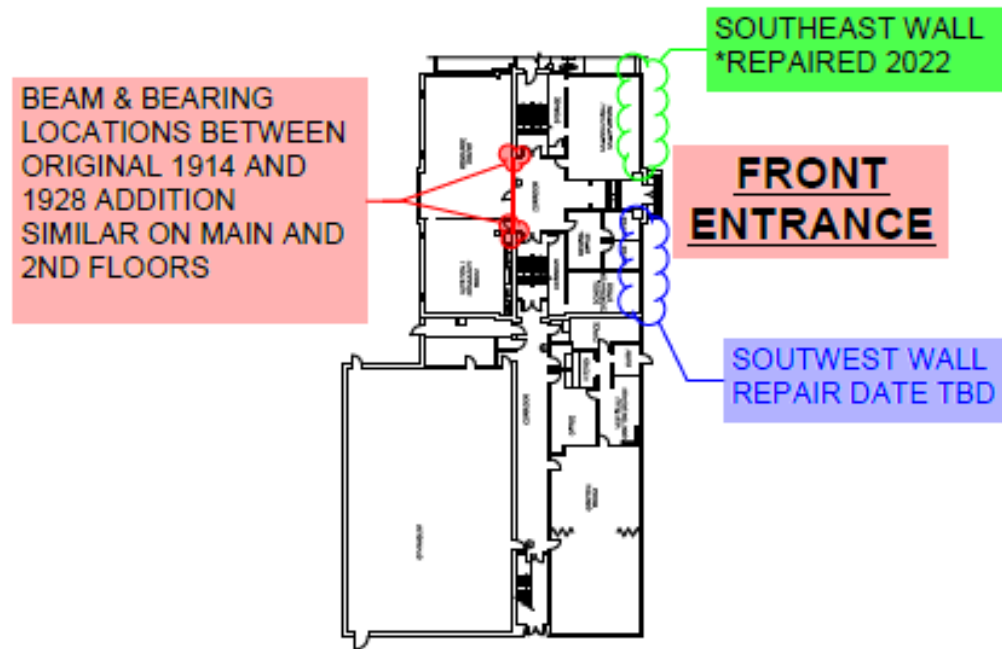
Based on the 2022 Structural Review:

- Attended an emergency meeting with Ministry and Government. Made then aware of the 2022 structural report.
- RCSD will apply for emergency funding to maintain the building – **received and will offset approximately 75% of our cost**
- RCSD added Holy Rosary to Capital projects list, asking for a rebuild. List approved for submission to the Ministry of Education at the February 6<sup>th</sup> Board Meeting.



# Holy Rosary Community School Review

## Holy Rosary Catholic School Temporary Structural Repairs



 1ST FLOOR PLAN  
1:500





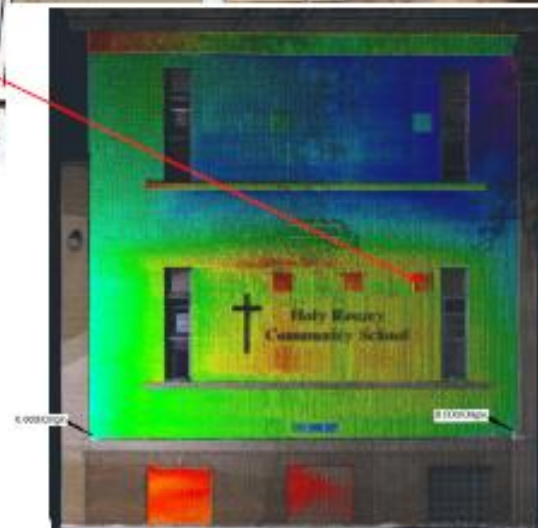
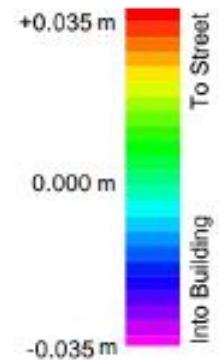
**Southeast Front Wall  
Before Repair**



**Southeast Front Wall  
Under Repair**

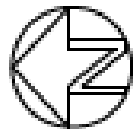
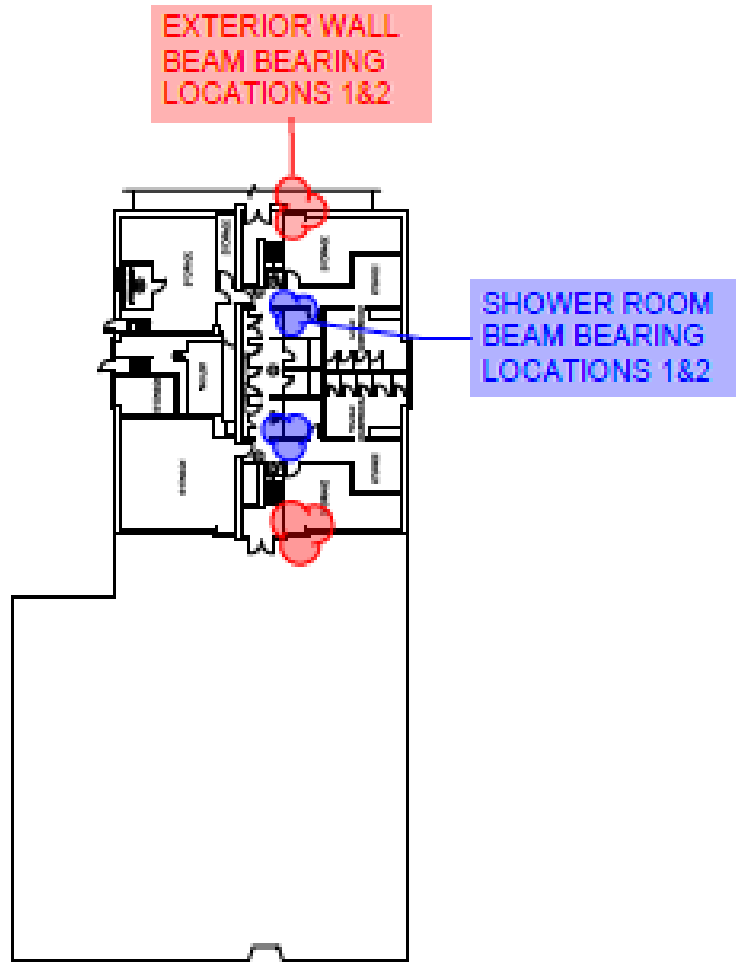


## Southwest Front Wall Temporary Support



Front  
Doors





**BASEMENT FLOOR PLAN**

1:500





Typcial Exterior  
Wall Beam  
Bearing Condition



# Holy Rosary Community School Review

## Distribution of Students *(Data as of Dec. 2022)*

Code	SP		PK	0K	01	02	03	04	05	06	07	08	09	10	11	12								Totals
BLANK			19	9	19	9	14	13	11	14	11	10												129
Totals			19	9	19	9	14	13	11	14	11	10												129





# Holy Rosary Community School Review

## Enrolment Projections (*Data as of December 2022*)

Grade	2018	2019	2020	2021	2022	2023	2024	2025	2026	2027	2028	2029	2030	2031	2032	2033
<b>PK</b>	15	13	11	11	13	12	12	12	12	12	12	12	12	12	12	12
<b>K</b>	6	12	8	18	8	11	10	9	10	11	11	11	11	11	11	11
<b>1</b>	12	9	11	10	19	9	12	10	10	11	11	12	12	12	12	12
<b>2</b>	7	14	9	13	9	20	9	12	11	10	12	12	13	13	13	13
<b>3</b>	10	8	10	13	14	8	20	9	12	11	10	11	12	12	12	12
<b>4</b>	8	10	9	16	14	15	10	21	10	13	12	11	13	13	14	14
<b>5</b>	11	8	8	10	11	13	14	9	20	9	12	11	10	11	12	13
<b>6</b>	15	12	8	8	13	12	14	15	9	21	10	13	12	11	12	13
<b>7</b>	13	11	10	6	10	12	11	13	14	9	20	9	12	11	10	11
<b>8</b>	10	13	9	8	11	10	12	11	13	14	8	19	9	12	11	10
<b>1 to 3</b>	29	31	30	36	42	37	41	31	33	32	33	35	37	37	37	37
<b>4 to 8</b>	57	54	44	48	59	62	61	69	66	66	62	63	56	58	59	61
<b>1 to 8</b>	86	85	74	84	101	99	102	100	99	98	95	98	93	95	96	98
<b>PK to 8</b>	107	110	93	113	122	122	124	121	121	121	118	121	116	118	119	121
<b>Total</b>	107	110	93	113	122	122	124	121	121	121	118	121	116	118	119	121



# Holy Rosary Community School Review

- **Current out of area Students at Holy Rosary**

37 are considered out of area

- 1 - St. Augustine Community School
- 1 - St. Bernadette School
- 1 - St. Michael School
- 3 - Deshay Catholic School
- 17 - St. Francis Community School
- 5 - St. Peter School
- 5 - Sacred Heart Community School
- 2 – St. Kateri Tekakwitha School
- 2 – St. Josephat School





# Holy Rosary Community School Review

## Holy Rosary Community School Options

### Option: Closure **June 2023**

- Begin transition activities to Sacred Heart Community School and planning for students and families immediately
- Starting **September 2023**, RCSD transportation provided for all Holy Rosary students in the *current* Holy Rosary boundary to Sacred Heart.

### Option: Closure **June 2024**

- Continue to operate Holy Rosary in the 2023-24 school year
- Next year begin transitioning activities and opportunities for staff students and families
- Starting **September 2024**, RCSD transportation provided for all Holy Rosary students in the *current* Holy Rosary boundary to Sacred Heart.
  - Transportation will be provided for families in current Holy Rosary boundary, who choose to move to Sacred Heart in September 2023 to support a successful transition



# Exchange Summary

Sean Chase, Regina Catholic School Division  
February 13, 2023

Please share considerations for Regina Catholic Schools' Board and Administration as we plan for the closure of Holy Rosary School.



## PARTICIPATION

### Breakdown of Participation



69

Participants



64

Thoughts



1,326

Ratings

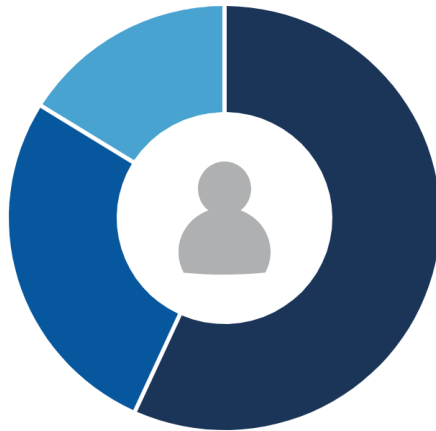



## PARTICIPATION

### Breakdown of Participation



How many children do I have currently attending Holy Rosary School?



%		Answer
57%	(36)	■ One
27%	(17)	■ Two
16%	(10)	■ More than two

# Holy Rosary Community School Review

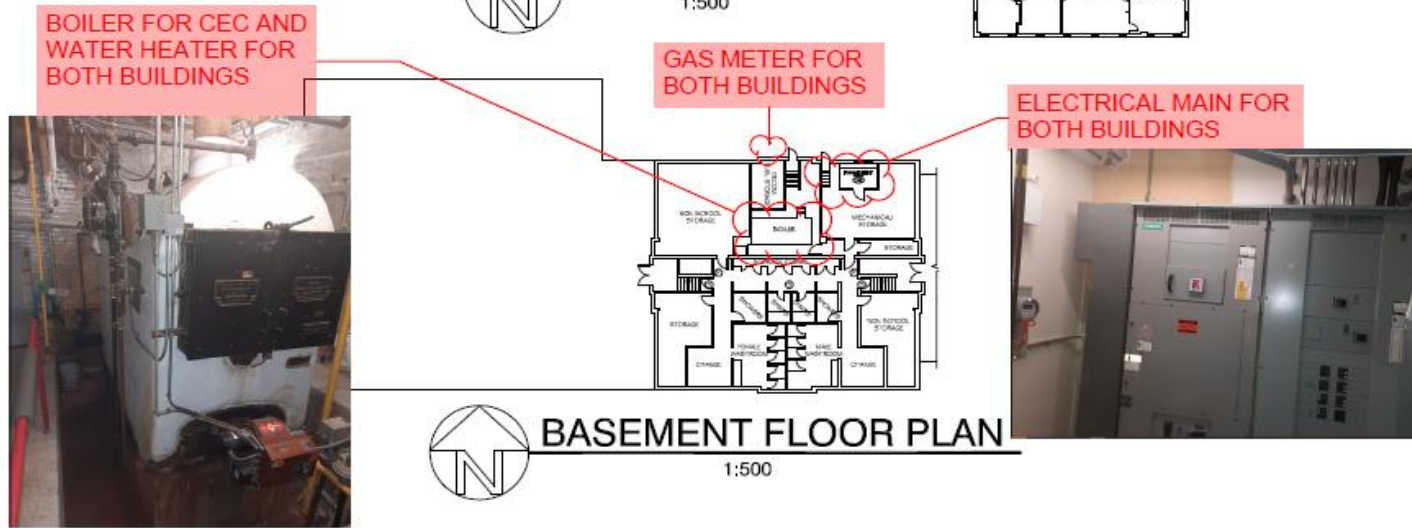
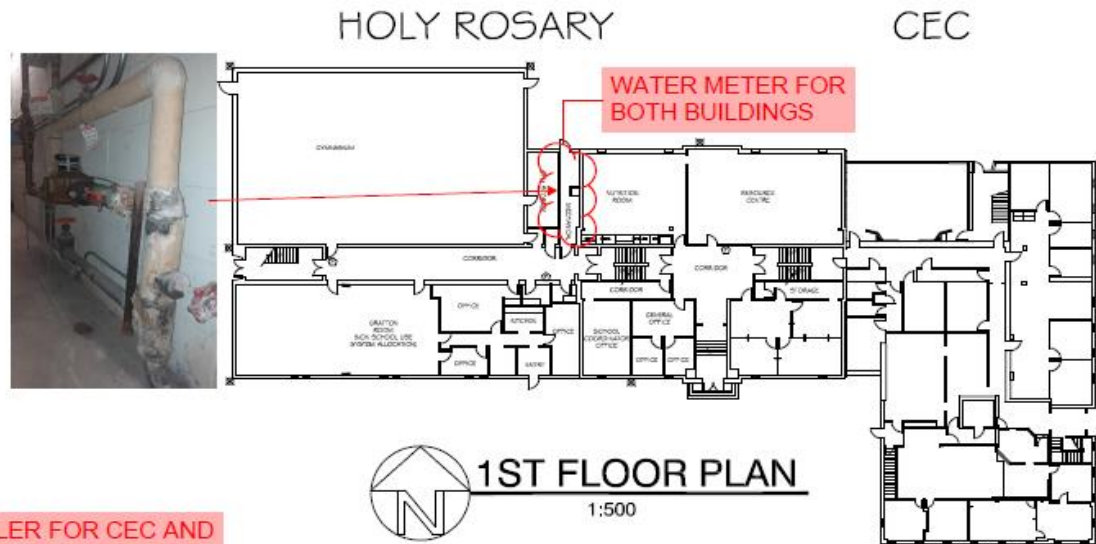
## Sacred Heart – Educational Programming

- Educational Partnerships
  - On site Indigenous Advocate
  - Grade 1 Literacy support Program (SHLAC)
- Full nutrition program – Breakfast, lunch and snacks available for all students as needed
- Regina Food Bank Partnership – food hampers, programing, weekend snacks program
- RCMP Reading nights – once a month RCMP cadets read with students
- Programming opportunities – English as an Additional Language (EAL), Learning Resource Teacher (LRT), Speech Language Program (SLP), Michif Language Program
- Strong community connections through Dream Broker and School Support Specialist
- Extracurricular and after school club opportunities
- Investigating the addition of a B&A program to support families
- Prairie Lilly Daycare is on site.



# Holy Rosary Community School Review

## Location of Utility Services



# Catholic Education Centre

Regina Catholic School Division has been operating from 2160 Cameron Street in a building constructed in 1955 with additions added in 1962 and 1971. The building is a two (2) story approximately 1,394 m<sup>2</sup> or 15,000 ft<sup>2</sup>.

CEC is fully depreciated and is an aging infrastructure which has reached its life expectancy with many deficiencies noted over the past few years:





- Building is woefully inadequate in terms of insulation factor.
- Boiler unit has long since reached its life span. Repair was done a couple of years ago to extend its life.
- Basement concrete floor has numerous cracks and unevenness due to the shifting of the clay soil.
- Plumbing and electrical at life expectancy.
- Safety concerns include:
  - Asbestos material in numerous locations
  - Stair railings do not meet code
  - No elevator
  - No fire suppression system
  - Ventilation is minimal
  - Awkward egress, in case of emergency
  - Minimal washrooms and very small washroom space
  - Building is not barrier-free access as defined by the National Building Code.
  - Building is dependent on the adjoining Holy Rosary Community School which contains the boiler system, main electrical distribution, main sewer, and water service.
  - Holy Rosary Community School has structural issues that will limit its future life span. Appendix A contains a report provided by JCK Engineering that describes the building condition structural assessment of the school. This has a significant implication on infrastructure requirements that are needed for CEC.





CEC is home to 65 dedicated personnel resulting in an extremely tight workspace with co-workers working out of hallways, closets, and cramped spaces.

- 18 CEC staff who work from other spaces in schools as there is no space available at the CEC location.
- Information Technology (IT) is an integral department of the CEC which has been working from Miller Comprehensive Catholic High School due to lack of space at CEC. This isolation factor has presented a significant challenge. Miller High School's enrollment has experienced significant growth and the space currently utilized by IT staff will be needed for Miller due to the enrolment pressures. A new head office which accommodates the growing IT Department will save future funding that would be required to add portables at Miller to accommodate growth.
- RCSD has been leasing indoor warehouse space for furniture and school-required operational items. Consolidating under one roof would lower costs and improve efficiency.
- RCSD has been renting external space to house regular administrative meetings as our current office does not have a large enough room.



# Holy Rosary Park





91R09011

111267020

22

111369090

398

17-20-2

99RA02447

23

111369113

25

110996860

110995987

26

110996848

27

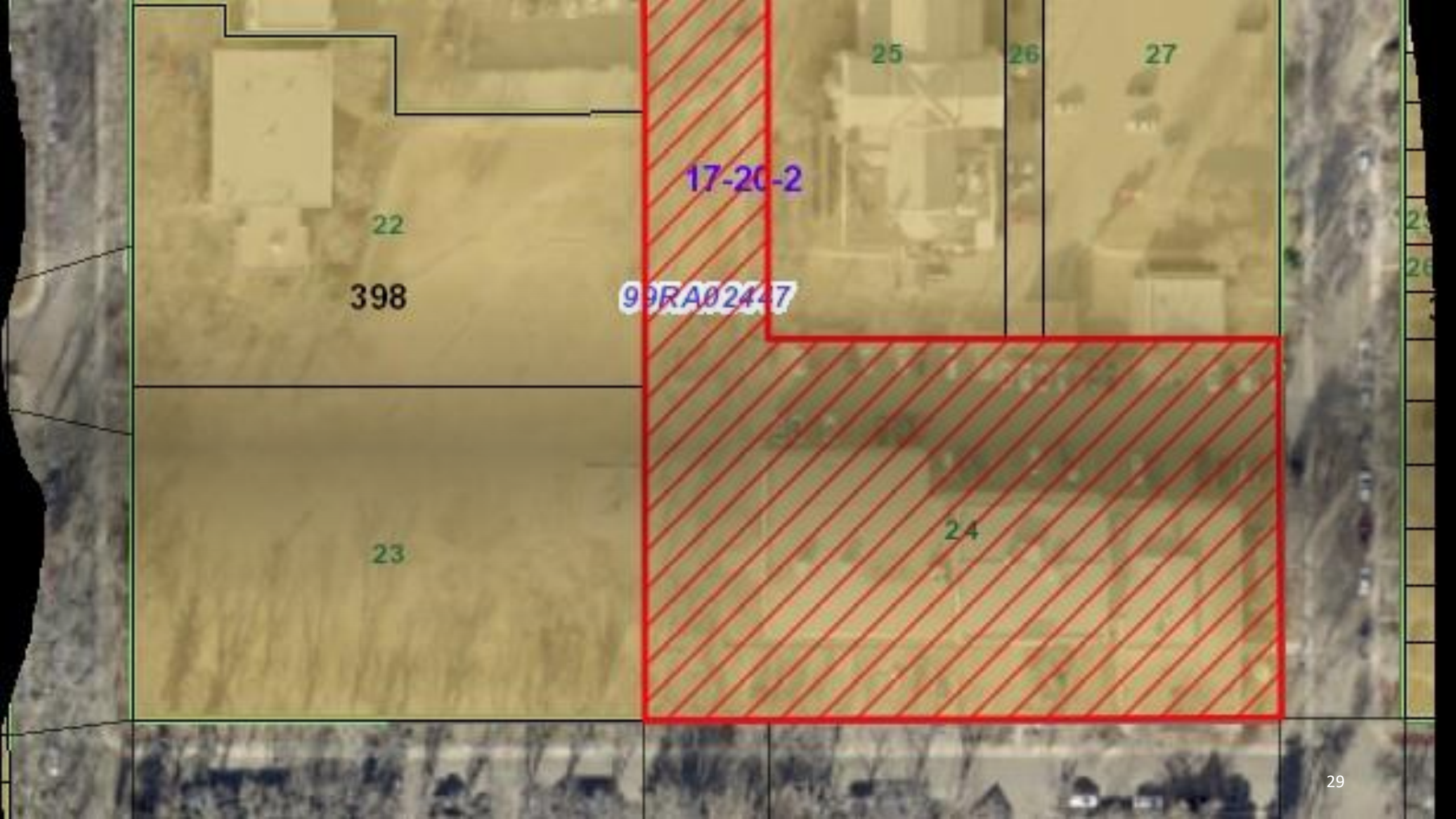
110996859

24

# Holy Rosary School/Catholic Education Centre







17-20-2

99RA02447

22

398

23

25

26

27

24

# Archdiocese of Regina



# Questions

